

Ethernet setup and installation 12/08/2008.

Note – this installation is only required for the CT4000 internal Ethernet module option.

Plug in the Combometer power and the Ethernet cable

Install the Lantronix DeviceInstaller by running C:\EsdTest\Lantronix\DeviceInstaller\setup.exe

or get latest version for Windows 7 >= ver 4.4.0.1 http://ltxfaq.custhelp.com/app/answers/detail/a_id/644

Install the Lantronix Com Port Redirector Manager by running

C:\EsdTest\Lantronix\ComPortRedirectorManager\setup.exe

or get latest version for Windows 7 >= ver 4.3.0.3

http://www.lantronix.com/ftp/cpr/Lantronix/4.3/4.3.0.3/Installers/Download_Web/setup.exe

1. Click Programs, Lantronix, DeviceInstaller (see picture below)
 - a. Assign a fixed IP address if possible, else choose DHCP (obtain IP from network)
 - b. Choose the Telnet tab (or open a DOS window (Programs, Accessories, Command Prompt) and type: C:\>telnet <ipaddress of xport> 9999
 - i. Click connect
 - ii. Hit Enter to get into Setup Mode. You have a short 2-second window to successfully get in. Start over if you miss it.
 - iii. Go into 1 for Channel1.
 - iv. Using the Enter key, advance through all the settings until you reach the line for 'DisConnMode'. Change this to 40 (four-zero). Hit enter.
 - v. Choose '9' to Save and Exit when you get back to the main menu to save your changes and reboot the XPort.
2. Refer to Xport-Direct-900-445b_CPR_QS.pdf
3. Open the Windows Firewall and add rules to allow UDP ports 30718, 43282, 43283 in and out.
4. Click Programs Lantronix, CPR 4.1, CPR Manager
 - a. Click the Search (magnifying glass) icon to see the available Ethernet devices. You should see the Xport listed. If not then you may need to change the Xport IP address (defaults to DHCP), so return to step 1
 - b. Click the cable icon to add a new port
 - c. Select the next available com port on the "ComPorts" window and click OK
 - d. Double click on the new com port
 - e. Double click on the Xport listed in the "Devices" pane to automatically enter the IP address.
 - f. Click "Server Reconnect" and "Timeout reconnect" 7 seconds, 0 reconnect limit
 - g. Click "TCP KeepAlive, 15000 KeepAlive Time msec, 1000 interval
 - h. Click the "RFC 2217" check box and select "Do not tie DTR to any other signal". And "Device Server Transmit Buffer Empty"
 - i. Click the Save (floppy disk) icon
 - j. Click the Com x Tests
 - k. Click Open to test it. If it stays open, then it is OK, so close it and exit
5. Check the com port settings:
 - a. Open the Microsoft hardware device manager (start, settings, control panel, system, hardware, device manager)
 - b. Click on Ports
 - c. Doubleclick on "Lantronix CPR port"
 - d. Click on "Port Settings"
 - e. BitsPerSecond= 9600 baud, DatBits = 8, Parity = None, Stopbits = 1, Flow control = None.
 - f. OK
 - g. If these properties do not take effect, you might have to reboot the computer.

Lantronix DeviceInstaller 4.2.0.0

File Edit View Device Tools Help

Search

Exclude

Assign IP

Upgrade

Lantronix Devices - 1 device(s)

Local Area Connection (192.168.2.20)

XPort

XPort Direct - firmware v6.5.0.4

192.168.2.32

Device Details

Static Web Pages

Telnet Configuration

Property	Value
Name	
Group	
Comments	
Device Family	XPort
Type	XPort Direct
ID	X7
Hardware Address	00-20-4A-97-36-E2
Firmware Version	6.50
Extended Firmware Version	6.5.0.4
Online Status	Online
IP Address	192.168.2.32
IP Address was Obtained	Dynamically
Obtain via DHCP	True
Obtain via BOOTP	False
Obtain via RARP	False
Obtain via Auto IP	True
Subnet Mask	255.0.0.0
Gateway	0.0.0.0
Number of COB partitions suppo...	0
Number of Ports	1
TCP Keepalive	45
Telnet Enabled	True
Telnet Port	9999
Web Enabled	False
Maximum Baud Rate Supported	230400
Firmware Upgradable	True
Supports Configurable Pins	True
Supports Email Triggers	False
Supports AES Data Stream	False
Supports 485	True
Supports 920K Baud Rate	False
Supports HTTP Server	False
Supports HTTP Setup	False
Supports 230K Baud Rate	True
Supports GPIO	True

Assign IP Address

IP Discovery Settings

What protocols should the device use to discover its IP address from the network?

☒ DHCP

☐ BOOTP

☐ RARP

☒ Auto-IP

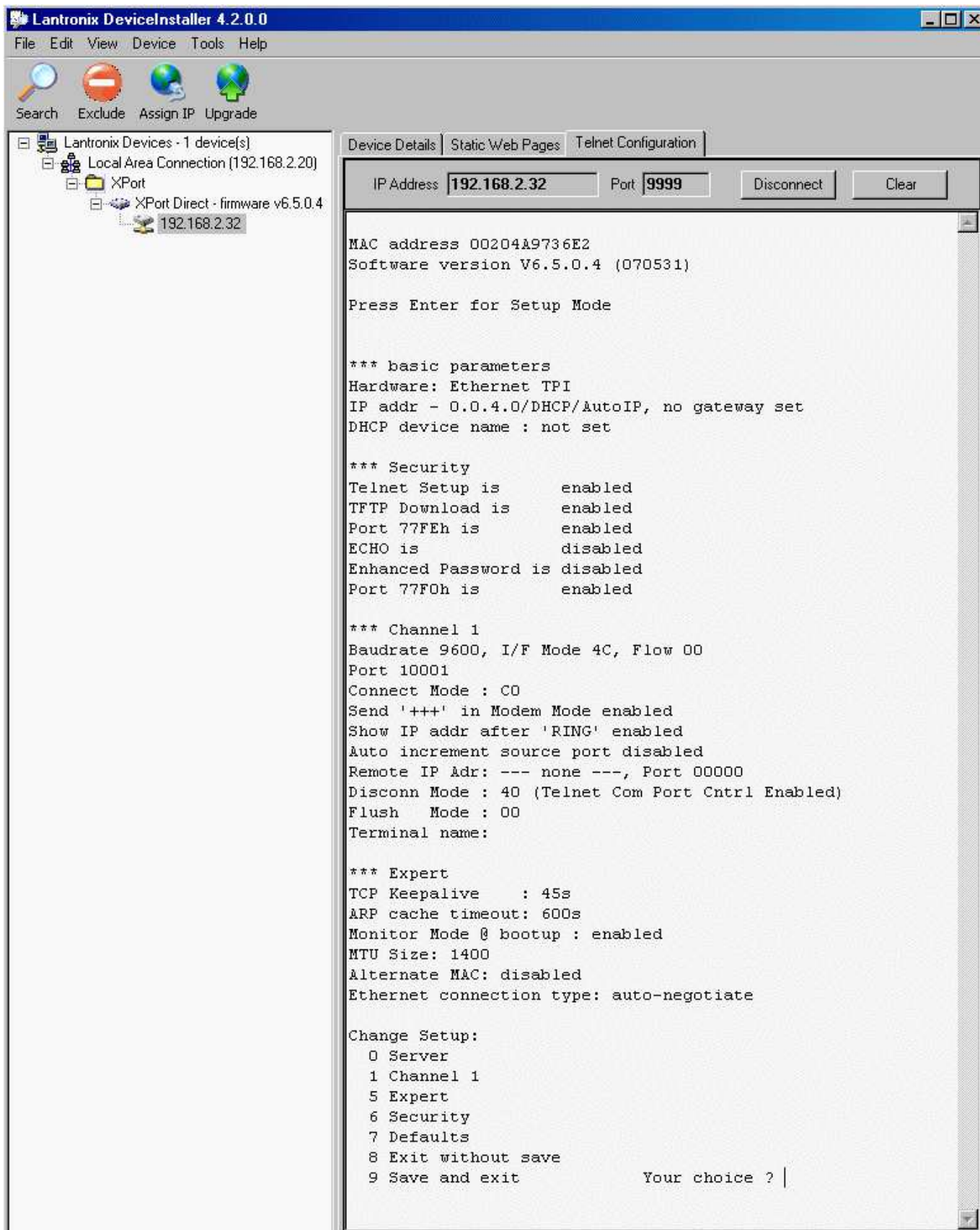
☒ Clear Gateway

It is recommended that the "Auto-IP" Check Box be checked if the "DHCP" Check Box is checked.

It is also recommended that the "Clear Gateway" Check Box be checked if the "Auto-IP" Check Box is checked.

If DHCP fails or is not enabled, the device needs to revert to Auto-IP. If Auto-IP is not set, then DeviceInstaller will not be able to detect the device. Also, if Auto-IP is set and the gateway is set, DeviceInstaller will not be able to detect the device.

Ready



MAC address 00204A9736E2
Software version V6.5.0.4 (070531)
Press Enter for Setup Mode
*** basic parameters
Hardware: Ethernet TPI
IP addr - 0.0.4.0/DHCP/AutoIP, no gateway set
DHCP device name : not set
*** Security
Telnet Setup is enabled
TFTP Download is enabled
Port 77FEh is enabled
ECHO is disabled
Enhanced Password is disabled
Port 77F0h is enabled
*** Channel 1
Baudrate 9600, I/F Mode 4C, Flow 00
Port 10001
Connect Mode : C0
Send '+++' in Modem Mode enabled
Show IP addr after 'RING' enabled
Auto increment source port disabled
Remote IP Addr: --- none ---,
Port 00000
Disconn Mode : 40 (Telnet Com Port Cntrl Enabled)
Flush Mode : 00
Terminal name:
*** Expert
TCP Keepalive : 45s
ARP cache timeout: 600s
Monitor Mode @ bootup : enabled
MTU Size: 1400
Alternate MAC: disabled
Ethernet connection type: auto-negotiate
Change Setup:
0 Server
1 Channel 1
5 Expert
6 Security
7 Defaults
8 Exit without save
9 Save and exit Your choice ? 0
IP Address : (000) .(000) .(004) .(000)
Set Gateway IP Address (N) ?
Netmask: Number of Bits for Host Part (0=default) (0)
Change telnet config password (N) ?
Change DHCP device name (not set) ? (N) ?
Change Setup:
0 Server
1 Channel 1
5 Expert
6 Security

7 Defaults
 8 Exit without save
 9 Save and exit Your choice ? 1
 Baudrate (9600) ?
 I/F Mode (4C) ?
 Flow (00) ?
 Port No (10001) ?
 ConnectMode (C0) ?
 Send '+++ ' in Modem Mode (Y) ?
 Show IP addr after 'RING' (Y) ?
 Auto increment source port (N) ?
 Remote IP Address : (000) .(000) .(000) .(000)
 Remote Port (0) ?
 DisConnMode (40) ? (Telnet Com Port Cntrl Enabled)
 FlushMode (00) ?
 DisConnTime (00:00) ?:
 SendChar 1 (00) ?
 SendChar 2 (00) ?
 Terminal name () ?
 Change Setup:
 0 Server
 1 Channel 1
5 Expert
 6 Security
 7 Defaults
 8 Exit without save
 9 Save and exit Your choice ? 5
 TCP Keepalive time in s (1s - 65s; 0s=disable): (45) ?
 ARP Cache timeout in s (1s - 600s) : (600) ?
 Disable Monitor Mode @ bootup (N) ?
 MTU Size (512 - 1400): (1400) ?
 Enable alternate MAC (N) ?
 Ethernet connection type: (0) ?
 Change Setup:
 0 Server
 1 Channel 1
 5 Expert
6 Security
 7 Defaults
 8 Exit without save
 9 Save and exit Your choice ? 6
 Disable Telnet Setup (N) ?
 Disable TFTP Firmware Update (N) ?
 Disable Port 77FEh (N) ?
 Disable ECHO ports (Y) ?
 Enable Enhanced Password (N) ?
 Disable Port 77F0h (N) ?
 Change Setup:
 0 Server
 1 Channel 1
 5 Expert
 6 Security
 7 Defaults

8 Exit without save

9 Save and exit

Your choice ? 9

